

# *2014 Mazda CX-5*

*SKYACTIV* TECHNOLOGY



**mazda**



## *WHAT DO YOU DRIVE?*

*Is it inspiring?*

*What were the people who built your car thinking?*

*Are they just another behemoth car maker following the rules?  
Or do they break them?*

*Do they push the boundaries of tradition and habit  
to achieve the unachieved?*

*Are they insightful craftsmen,  
obsessing over the details with a crazed passion?*

*Building less - building better -  
for a discerning few?*

*Are you one of the few  
who cares about what you drive,  
how it drives  
and the way it makes you feel?*

*We're with you.*

*Because we believe if it's not worth driving,  
it's not worth building.*

*We build Mazdas.*

*What do you drive?*

*ZOOM-ZOOM*



### **The automotive revolution continues.**

The CX-5 story starts eleven years ago when Mazda set out on a new mission: To discover new possibilities in automotive engineering and create a new vehicle that achieves exceptional fuel economy without giving up an ounce of our signature design, technological touch points and connected-to-the road performance. SKYACTIV TECHNOLOGY is the result of more than a decade of ground-up innovation built on a whole new engineering philosophy. The CX-5 crossover is the first full expression of this idea - an idea rooted in balance and harmony. All essential components, including engine, transmission, body and chassis, are engineered to work together seamlessly for exceptional efficiency and optimal performance. And that's why the 2014 CX-5 offers you top-of-class fuel economy. Without ever compromising the pure exhilaration of a vehicle you love to drive.



Information Provided by:  
**DEALER**  
E-PROCESS



**"Through KODO design, I want to convey strength and beauty in movement that inspires the spirit."**

-Ikuo Maeda, Global Head of Design



### Inspired design from the soul of motion.

The CX-5 is the first in the next generation of Mazda design - KODO, which means "soul of motion". Inspired by the powerful stance of a cheetah the moment before it pounces, KODO suggests motion triggered by the release of tremendous force and accumulated energy. Every curve is sculpted with this in mind, and every detail reveals the designer's purpose: A powerful, bold new look down to the last detail.

**"The CX-5 is more sports car than crossover, which is a refreshing change."**

-Graeme Fletcher, National Post

**"The CX-5 delivers a driving fun factor that's usually absent in this segment."**

-Ron Fortier, Mazda in the News

**"The CX-5 is a flexible, thoughtful, sharp-looking vehicle that has been crafted from the ground up to give its all in the service of those who love to drive."**

-Jean Jennings, AUTOMOBILE Magazine, February 2012



Information Provided by:  
**DEALER**  
E-PROCESS

## Groundbreaking innovation is in our DNA.

Refusing to compromise lies at the heart of every Mazda. And it's how we achieve unheard of fuel economy, low emissions and outstanding performance in the same vehicle. Our SKYACTIV TECHNOLOGY is a comprehensive engineering strategy that shakes off old ideas and limitations, pushing the boundaries of what's possible. The 2014 CX-5 is built from the ground up from the entire suite of SKYACTIV TECHNOLOGY. With engineering that seamlessly co-ordinates how component parts work together, thrifty fuel economy and nimble road manners now both come standard in one vehicle. Imagine that. Mazda does.

### SKYACTIV-G

The 2014 CX-5 comes with a choice of SKYACTIV-G engines. The 2.0 L is the first re-imagining of the internal combustion engine (GX model). The new 2.5 L engine (GS and GT models) is the next incarnation. While conventional engines waste upwards of 70% of their energy potential, both SKYACTIV-G engines reduce emissions and increase fuel efficiency on a grand scale. With component parts engineered to work together more efficiently, the energy it takes to drive your CX-5 is significantly reduced.

### SKYACTIV-Drive

Our engineers created a precise, high-performance automatic transmission that combines the direct, responsive feel of a manual transmission with the silky smoothness of an automatic. It is instantly responsive, yet delivers 7% more efficiency than our non-SKYACTIV automatic transmission.

### SKYACTIV-MT

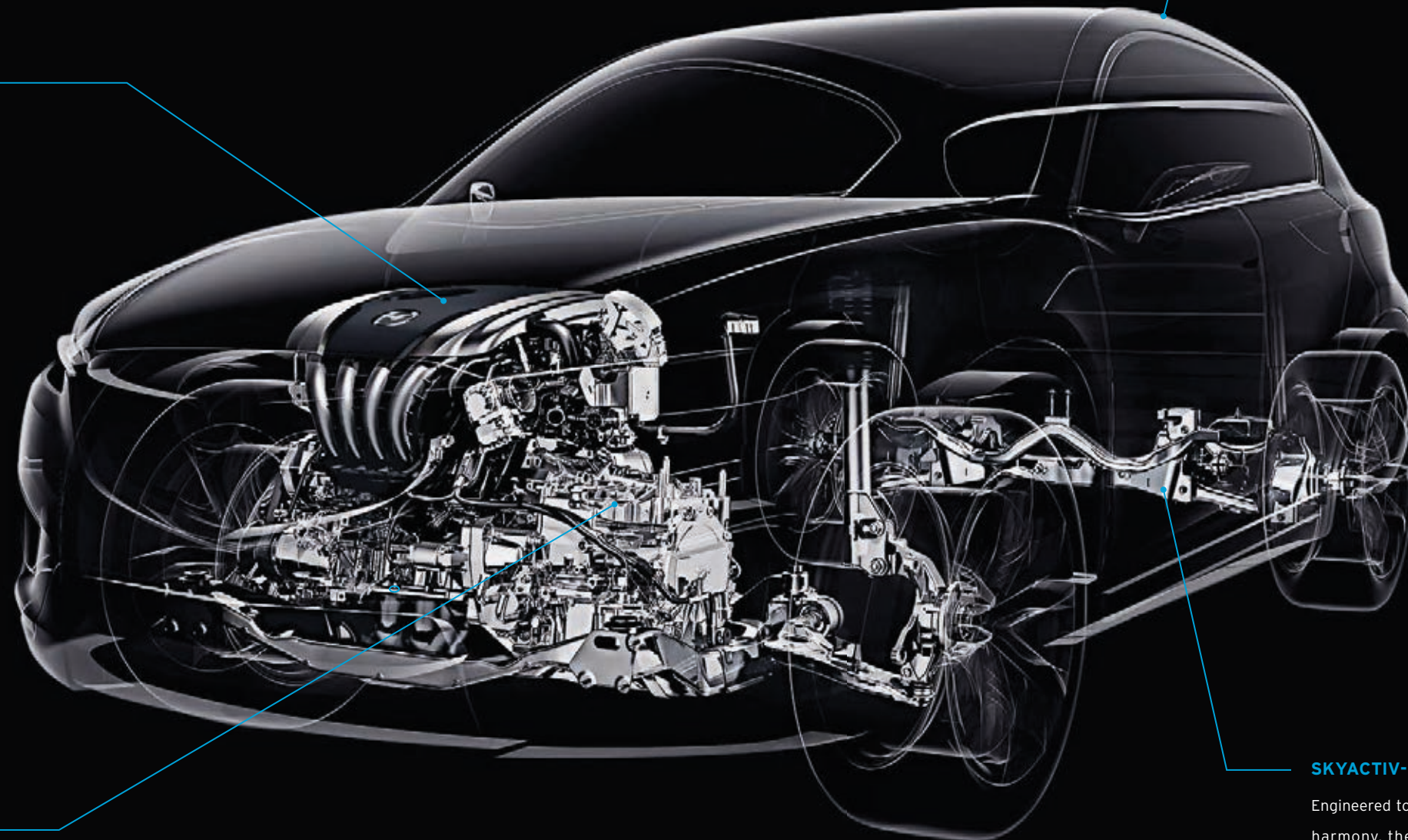
This 6-speed manual transmission has the shortest shift throw in its class. Inspired by the legendary MX-5, it's also smaller, lighter and stronger than any we've built before.

### SKYACTIV-Body

We are constantly searching for new ways to make you safer behind the wheel. That's why Mazda is the first auto manufacturer to use ultra-high-tensile steel in the body. Because we crafted an efficient structural design and used ultra-high-tensile steel in critical areas, the CX-5's body is lighter than normal, yet it's stiffer and stronger.

### SKYACTIV-Chassis

Engineered together with the SKYACTIV-Body to work in perfect harmony, the steering and suspension systems achieve two seemingly contradictory goals at once: To be nimble at low speeds, yet stable at high speeds. We also engineered them to be light, allowing for a more direct and agile feel.



## Fuel economy that doesn't sacrifice performance.

Fuel efficiency or performance? It's a tough choice. Get great fuel efficiency and you lighten the load on your wallet, but driving exhilaration gets left in the dust. Opt for performance and you pay every time you hit the gas station. SKYACTIV TECHNOLOGY is the answer to this conundrum. The 2014 CX-5 GX with the 2.0 L engine and 6-speed manual transmission achieves up to 5.7 L/100 km (50 mpg) highway\*. That puts the CX-5 at the top of its class. Our 2.5 L engine on the GS and GT models is also ultra fuel efficient. With available all-wheel drive†, you can achieve a very frugal 6.6 L/100 km (43 mpg) highway\*. But how does it handle? The CX-5 is a pure-bred Mazda, built with our signature sports car pedigree. But don't take our word for it. Drive one.

## What you want. What you need. Together at last.

All too often, great fuel efficiency means giving up great handling. Even with top-of-class fuel economy, the CX-5 is a fun-to-drive performer. Simply put, SKYACTIV TECHNOLOGY's light weight makes the CX-5 a quick study in agile handling. The ingenious engineering that underpins its muscular physique takes fuel-efficient performance from boring to breathtaking in nothing flat. In fact, the CX-5 has all the elements of our most impressive sports cars. 4-wheel independent suspension with front and rear stabilizer bars. Power-assisted rack-and-pinion steering. And for even more control in adverse conditions, opt for models with our All-Wheel-Drive† system. Because let's face it: Driving is no fun if you have to sacrifice the reason you love driving in the first place.



\*Estimated fuel economy. Actual results may vary.

†Optional on the GX model with automatic transmission and Convenience Package, optional on the GS model and standard on the GT model.



Information Provided by

MAZDA



## Take control in comfort.

Step inside the 2014 CX-5 and it's clear. This is a cockpit that welcomes with intuitive comforts, signalling the driving pleasure to come. The focal point of its Human-Machine Interface (HMI) is the driver-centric instrument panel. Inspired by the legendary MX-5, it keeps vital information easily accessible and within sightlines. An abundance of standard features like steering-wheel-mounted cruise and audio controls, push-button ignition and remote keyless entry make any road trip an engaging proposition. Then there are the soft materials and thoughtful accents that add to a secure, refined atmosphere. Like the available leather-trimmed 8-way power-adjustable driver's seat with power lumbar support\* specifically designed for optimal relief of joint stress on long trips. Add available technological touch points like Bluetooth® controls† right on your steering wheel, rearview camera‡ and HD radio†, and there's no doubt that this is a cockpit that makes you want to get in and drive.

\*Standard on the GT model.

‡Standard on the GS and GT models. Rearview camera does not provide a comprehensive view of the entire rear area of this vehicle. Always check your surroundings.

†Available on the GX model with Convenience Package and standard on the GS and GT models.



Information provided by:

DEALER  
E-PROCESS



**Not only can you have it all, you can now bring it all with you.**

Taking a trip to the mountains? Transporting gear? Or navigating errands with family in tow? With an extra-wide lift-gate, a lower load height and up to 1,835 L of cargo space, the CX-5's 60/40-split folding rear seatback (GX model) is ready to take on your day - whatever kind of day you're having. Or opt for the GS and GT models with an ingenious 40/20/40-split system. You'll get a roomy 1,852 L and handy remote access levers that make loading extra-long cargo like skis\* a snap - while leaving room for up to four passengers. This is cargo space that multi-tasks right along with you. This is a cargo space for real life.



\*Please remember to properly secure all cargo.  
Interior not exactly as shown.

## Our focus on technology keeps you focused on the road.

There are so many intelligent technology features available in the CX-5, it might be difficult deciding which is your favourite. From a Blind-Spot Monitoring System\*▲ to Bose® audio▼ to Bluetooth® hands-free capability‡, your CX-5 is ready to guide you, entertain you, connect with you and respond to you. While each feature has its own function, they're all there to make driving informed, safe and fun.

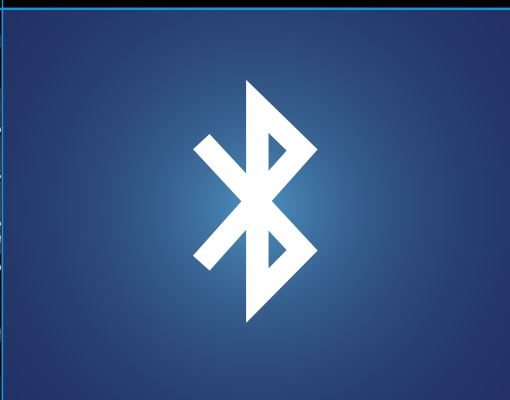
### Rearview Camera

This rearview camera\*▲ offers increased visibility of objects behind you, and is activated whenever you shift the CX-5 into reverse.



### Bluetooth® Hands-free Phone and Audio

Using the steering-wheel-mounted controls, make and take calls via the available Bluetooth® hands-free phone system. Also enjoy your music through wireless audio streaming from your Bluetooth®-compatible audio device.‡



### Colour Display Screen

In addition to personalization features, you can easily view Bluetooth® phone and audio information, as well as navigation system routes (if equipped). It also acts as the display for models equipped with the rearview camera.‡



### SiriusXM® Satellite Radio

Enjoy commercial-free music, sports, news, comedy, talk and entertainment with a free 6-month trial subscription with SiriusXM® Satellite Radio.††



### USB Connectivity

USB connectivity and auxiliary audio input jacks are standard on every CX-5. Use steering-wheel-mounted controls or the display screen to easily access and control your music.



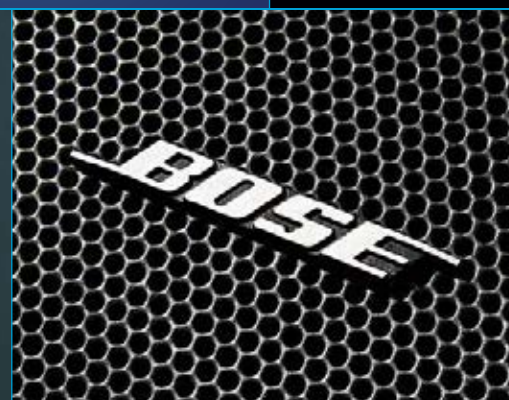
### Navigation System

The navigation system†† offers advanced features like voice recognition, advanced lane guidance and route recommendations. Whether you have it installed upon delivery or add it later as an accessory, it's always integrated with no plug-in required.



### Blind-Spot Monitoring System

Standard on the GS and GT models, the Blind-Spot Monitoring System\*▲ uses radar sensors to detect objects in your left or right blind spots and then alerts you with a warning light that appears in the appropriate side mirror. If you signal a lane change while an object is there, the light blinks and a cabin warning chime sounds.



### Bose® Centerpoint® Surround Sound System with AudioPilot®

Bose®▼ audio features Centerpoint® circuitry that produces stunning multi-channel Surround Sound CD/MP3 performances through an impressive 9 speakers, while AudioPilot® compensates for ambient road, wind and cabin noises.



### Intelligent Key System

Anticipating your arrival, the CX-5's intelligent keyless entry system▼ recognizes your approach, bringing your CX-5 to life. Doors and lift-gate are ready to be unlocked at the push of a button, without having to take out the key fob.

### Other available features include:

- > Rain-sensing front windshield wipers▲
- > HD radio\*
- > Trip computer
- > Power glass moonroof▲
- > MP3 functionality on CD player
- > SMS text message function\*\*\*

\*Always check your mirrors. Be aware of the traffic around you.

†Available on the GX with Convenience Package and standard on the GS and GT models.

‡Rearview camera does not provide a comprehensive view of the entire rear area of this vehicle. Always check your surroundings.

▲Standard on the GS and GT models.

▼Standard on the GT model.

††Available on the GT model with Technology Package.

\*\*\*Text messaging function is only compatible with certain devices.



## Extraordinary protection, without sacrificing control.

The SKYACTIV-Body uses ultra-high tensile steel in critical areas to make the body ultra-strong to help protect you in a collision. At the same time it's ultra-light, so that your CX-5 is nimble and easy to manoeuvre in order to help you avoid an accident in the first place. The SKYACTIV-Chassis enhances control by giving you agility at low speeds and stability at higher ones. And the available All-Wheel-Drive system<sup>▲</sup> automatically adjusts during changing road conditions. From side-impact door beams to air bags\*, roll-over sensors and the new available Smart City Brake Support (SCBS) system<sup>††</sup>, you can be confident the CX-5 has got your back, both inside and out.

### Six Standard Air Bags

Advanced dual front air bags\* that use inflators with both crash-zone and driver's/front passenger's seat weight sensors are standard on all CX-5 models - as are front dual side air bags and dual side-impact air curtains with coverage for front and rear passengers.

### Enhanced Stability & Control

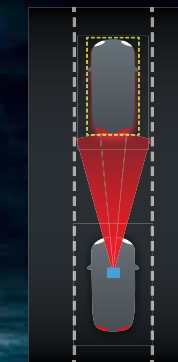
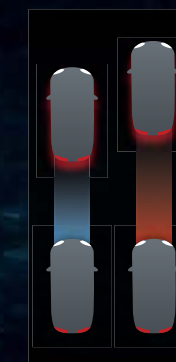
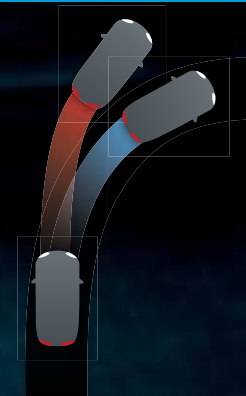
The Traction Control System detects wheel spin and then reduces engine power to help improve traction when accelerating in slippery conditions. Dynamic Stability Control<sup>‡</sup> modulates the engine and brakes to help keep you on your intended path while driving around corners.

### Ring Structure

Mazda's Ring Structure in the SKYACTIV-Body uses ultra-high-tensile steel to make the body more rigid than a typical steel body, and the structure is engineered to distribute energy to make the cabin even stronger.

### Integrated Child-Seat Anchors

Child-safety seat anchors and tethers in the second row make it easy to get your little ones in and out of your CX-5 while helping to keep them safe on your journey.



### Bi-Xenon Adaptive Front-Lighting System

On the GT model with Technology Package, you'll find the Adaptive Front Lighting System and self-levelling Bi-Xenon headlights<sup>††</sup> - specifically designed to help you see around corners at night, literally. As you turn into a corner, the headlights move up to 15° in the direction of your turn, thereby improving visibility and allowing you to spot potential hazards and dangers up ahead.

### Advanced Braking Technologies

A comprehensive set of advanced braking technologies comes standard on the CX-5. Large 4-wheel disc brakes promote linear, fade-resistant stopping power. Electronic Brake Force Distribution (EBFD) applies braking force to individual wheels based on changing road conditions, helping to keep you in control. And in emergency situations, an Anti-lock Brake System (ABS) pulses the brakes hundreds of times per second, preventing wheel lock-up so you can make controlled stops. At the same time, brake assist automatically increases braking pressure, thereby reducing stopping distance.

### Smart City Brake Support (SCBS)

Smart City Brake Support<sup>††</sup> uses a near infrared laser sensor to detect any vehicle up to 6 m ahead and helps braking when there is a high risk of impact. At speeds of 4 - 30 km/h, the system moves brake pads closer to the discs so the brakes can produce stopping power more quickly if the driver presses the brake pedal.

\*Always wear your seat belt and secure children in the rear seat in appropriate child restraints.

<sup>‡</sup>Dynamic Stability Control (DSC) is not a substitute for safe driving practices.

<sup>▲</sup>Optional on the GX model with automatic transmission and Convenience Package, optional on the GS model and standard on the GT model.

<sup>††</sup>Available on the GT model with Technology Package.

## CX-5 Colour Combinations

PAINT COLOURS	GX		GS		GT	
	BLACK CLOTH	SAND CLOTH	BLACK CLOTH	SAND CLOTH	BLACK LEATHER	SAND LEATHER
Jet Black Mica	•		•		•	•
Crystal White Pearl	•	•	•	•	•	•
Meteor Grey Mica	•		•		•	
Aluminum Metallic Mica	•		•		•	
Sky Blue Mica	•		•		•	
Soul Red Mica			•	•	•	•

• = Available

## CX-5 Specifications and Capacities

SPECIFICATIONS	GX	GS/GT
Engine type	SKYACTIV-G 2.0 L DOHC 16-valve 4-cylinder	SKYACTIV-G 2.5 L DOHC 16-valve 4-cylinder
Displacement	1,998 cc	2,488 cc
Compression ratio	13.0:1	13.0:1
Horsepower SAE net	155 @ 6,000 rpm	184 @ 5,700 rpm
Torque SAE net lb. ft.	150 @ 4,000 rpm	185 @ 3,250 rpm (FWD) 185 @ 4,000 rpm (AWD)
Fuel system	Direct Injection	Direct Injection
Recommended fuel	Regular	Regular
Fuel economy city/highway (L/100 km)*		
6MT FWD	7.8/5.7 (36/50 mpg)	
6AT FWD	7.7/6.1 (37/46 mpg)	8.3/6.2 (34/46 mpg)
6AT AWD	8.0/6.4 (35/44 mpg)	8.5/6.6 (33/43 mpg)
Curb weight (kg)		
6MT FWD	1,451	
6AT FWD	1,482	1,533
6AT AWD	1,553	1,604

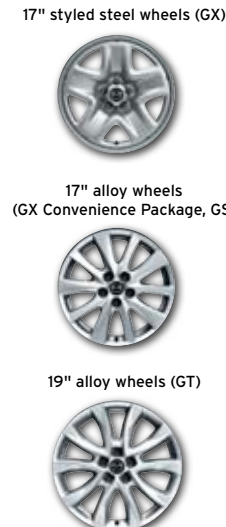
\*Estimated fuel economy. Your actual fuel consumption may vary. Mpg is listed in imperial gallons.

EXTERIOR DIMENSIONS	
Wheelbase/overall length (mm)	2,700/4,555
Overall width (mm)	1,840
Overall height (mm)	1,670/1,710 (with antenna)
Track (fr/rr) (mm)	
17" wheels	1,584/1,587
19" wheels	1,584/1,588
Turning circle, curb-to-curb (m)	11.2
INTERIOR DIMENSIONS	
Headroom (fr/rr) without moonroof (mm)	1,018/991
Headroom (fr/rr) with moonroof (mm)	990/991
Legroom (fr/rr) (mm)	1,041/997
Shoulder room (fr/rr) (mm)	1,460/1,410
Cargo length (mm)	982 (rear seat to tailgate)
Cargo width (mm)	1,451/1,050 (between rear tires)
Rear lift-gate opening height (mm)	827
Rear lift-gate opening width (mm)	1,128
CAPACITIES	
Seating	5
Cargo volume behind 2nd row seats (L)	966
Cargo volume with rear seats folded (L)	1,835 (60/40-split); 1,852 (40/20/40-split)
Fuel tank (L)	56 L (FWD); 58 L (AWD)

## CX-5 Upholstery



## CX-5 Wheel Options



## CX-5 Features (cont'd)

EXTERIOR	GX	GS	GT
Body-coloured door handles	S	S	S
Body-coloured lift-gate garnish	S	S	S
Body-coloured rear roof spoiler	S	S	S
Body-coloured power-operated heated door mirrors	S	S	S
Turn signal on door mirrors	S	S	S
LED high-mount stop lamp	S	S	S
Privacy glass	CP	S	S
Automatic headlight shut-off	S	S	S
Automatic on/off headlights with dusk sensor	-	S	S
Bi-Xenon headlights	-	-	TECH
Adaptive Front Lighting System (AFS) with automatic headlight levelling	-	-	TECH
Fog lights	-	S	S
Variable speed intermittent windshield wipers	S	-	-
Rain-sensing intermittent windshield wipers	-	S	S
Rear intermittent windshield wiper and washer	S	S	S
Tailpipe finisher	S	S	S
Mouldings for roof rack	S	S	S
WHEELS & TIRES			
17" styled steel wheels with 225/65R17 all-season tires	S	-	-
17" alloy wheels with 225/65R17 all-season tires	CP	S	-
19" alloy wheels with 225/55R19 all-season tires	-	-	S
Tire Pressure Monitoring System (TPMS)	S	S	S
Temporary spare tire	S	S	S
COMFORT & CONVENIENCE			
Air conditioning with pollen filter	S	S	S
Dual-zone automatic climate controls	-	-	S
Steering-wheel-mounted cruise controls	S	S	S
Tilt and telescopic steering wheel	S	S	S
Speed-sensing power door locks	S	S	S
Power windows with driver's one-touch up and down feature and timer	S	S	S
Remote keyless entry system with panic alarm	S	S	-
Push-button ignition	S	S	S
Intelligent key system (keyless entry) with panic alarm	-	-	S
Driver's and passenger's sunvisors with covered vanity mirrors	S	-	-
Driver's and passenger's sunvisors with illuminated covered vanity mirrors	-	S	S
Auto-dimming rearview mirror with HomeLink® garage door opener	-	-	S
Rear heater ducts	S	S	S
Illuminated entry	S	S	S
Front power outlets (2)	S	S	S
Cargo area power outlet	S	S	S
Cargo area light	S	S	S
Blind-Spot Monitoring System (BSM)	-	S	S
Smart City Brake Support (SCBS)	-	-	TECH
Navigation system	-	-	TECH
Rearview camera	-	S	S
Power glass moonroof with tilt and slide	-	S	S
SEAT & TRIM			
Reclining front passenger's seat	S	S	S
6-way manually adjustable driver's seat	S	-	-

SEAT & TRIM (cont'd)	GX	GS	GT
6-way power-adjustable driver's seat with manual lumbar support	-	S	-
8-way power-adjustable driver's seat with power lumbar support	-	-	S
Heated front seats	-	S	S
60/40-split fold-down rear seatback	S	-	-
40/20/40-split fold-down rear seatback with remote fold-down function	-	S	S
Cloth upholstery	S	-	-
Premium cloth upholstery	-	S	-
Leather-trimmed upholstery	-	-	S
Cloth door panel trim	S	S	-
Leather-like door panel trim	-	-	S
Leather-wrapped steering wheel	-	-	S
Leather-wrapped parking brake handle and shift knob	-	-	S
INSTRUMENT PANEL & STORAGE			
Exterior temperature gauge	S	S	S
Tachometer	S	S	S
Warning lights for low fuel level, low windshield washer fluid, door ajar, check engine, oil pressure and air bags	S	S	S
Trip computer	S	S	S
Monochromatic display screen	S	-	-
Colour display screen	CP	S	S
Overhead console with sunglasses holder	S	S	S
Front console with cup holders	S	S	S
Rear seat centre armrest with cup holders	-	S	S
Front and rear door storage pockets with bottle holders	S	S	S
Driver's and passenger's seatback pockets	S	S	S
AUDIO			
AM/FM CD player with 4 speakers	S	-	-
AM/FM CD player with 6 speakers	-	S	-
AM/FM CD player with 9-speaker premium Bose® audio system with Centerpoint® Surround Sound System and AudioPilot® noise compensation technology	-	-	S
MP3 functionality on CD player	S	S	S
HD radio	CP	S	S
SiriusXM® Satellite Radio ( <b>free 6-month subscription</b> )	-	-	TECH
Steering-wheel-mounted audio controls	S	S	S
Steering-wheel-mounted Bluetooth® controls with Audio Profile	CP	S	S
SMS text message function*	CP	S	S
USB and auxiliary audio input jacks	S	S	S

S = Standard O = Optional CP = Convenience Package TECH = Technology Package  
- = Not available

## CX-5 Packages

**CONVENIENCE PACKAGE (GX):** Privacy glass, 17" alloy wheels, colour display screen, steering-wheel-mounted Bluetooth® controls with Audio Profile, SMS text message function and HD radio.**TECHNOLOGY PACKAGE (GT):** Smart City Brake Support (SCBS), Bi-Xenon headlights, Adaptive Front Lighting System (AFS) with automatic headlight levelling, navigation system and SiriusXM® Satellite Radio.

† AWD on the GX is only available on the 6AT with Convenience Package.

\* Text messaging function is only compatible with certain devices.

© Bluetooth is a registered trademark of Bluetooth SIG, Inc.

© Bose, Centerpoint and AudioPilot are registered trademarks of Bose Corporation.

© HomeLink and the HomeLink house are registered trademarks of Johnson Controls, Inc.

© SiriusXM, the SiriusXM logo, channel names and logos are trademarks of SiriusXM Radio Inc. and are used under license.

**IF IT'S NOT WORTH DRIVING,  
IT'S NOT WORTH BUILDING.**

**WE BUILD MAZDAs.  
WHAT DO YOU DRIVE?**

*ZOOM-ZOOM*

**Visit [mazda.ca](http://mazda.ca) for Accessory Options.**

**MAZDA WARRANTY** The basic warranty on CX-5 covers all parts found to be factory defective for 3 years or 80,000 km, whichever comes first. Additional warranties cover powertrain components for a period of 5 years or 100,000 km, whichever comes first, body sheet metal perforation for 8 years and unlimited mileage and specific emission control components for up to 8 years or 128,000 km. Exclusions from coverage are limited to maintenance items or adjustments (repairs not requiring parts replacement) on vehicles over 12 months old and repairs due to normal wear and tear. Ask your Mazda Dealer for additional information.

**ROADSIDE ASSISTANCE PROGRAM** As part of our commitment to your total satisfaction, 2014 CX-5 owners are automatically enrolled in our Roadside Assistance Program. Roadside Assistance protects your CX-5 for the duration of the 3-year basic limited warranty. Should you require assistance during this period, our service will help to get your vehicle back on the road and minimize any inconvenience. For complete details on this program, see your Mazda Dealer.

**MAZDA MOBILITY ASSISTANCE PROGRAM** Mazda Canada believes that vehicle access is vital for everyone. Under this program, physically challenged customers who purchase or lease a new, unused Mazda vehicle may be eligible to receive assistance from Mazda Canada Inc. to aid with the cost of acquiring and installing adaptive driving aids on their vehicle. For complete details on this program, see your Mazda Dealer.

**MAZDA TEST-DRIVE EXPERIENCE** Exhilaration begins with the Mazda Test-Drive Experience - a uniquely designed road trip engineered to take you miles beyond the ordinary test-drive. Down local streets, on-ramps, highways and off-ramps. Through straightaways, S-curves and corners. It's all about putting a Mazda to the test under real-world conditions. It's about discovering the superb acceleration, braking, steering, handling and ride quality that every Mazda offers. And rediscovering that fun, connected-to-the-road feeling we call Zoom-Zoom.

**READY TO ROLL** Our pre-delivery commitment means every new Mazda is checked out, gassed up and fitted with floor mats.

**FINANCING WITHOUT THE FUSS** Whether you're buying or leasing a new Mazda, or a used vehicle, Mazda Financial Services can help make the financing process more convenient and satisfying. Mazda Financial Services is known for first-class customer service, a wide range of financing options and highly competitive rates. To find out which purchase or lease plan is right for you, talk with your Mazda Dealer, or visit [mazda.ca](http://mazda.ca).



For peace-of-mind motoring, we've created the Mazda Added Protection Plan (M.A.P.). M.A.P. complements your Mazda Limited Warranty for up to 7 years or 160,000 km, and protects you from unexpected repair expenses and the rising cost of repairs. All M.A.P. plans include Personal Budget and Repair Inflation Protection. In addition, all M.A.P. plans include Premium Roadside Assistance, Tire Road Hazard coverage and OEM Collision Part Coverage. Premium Roadside Assistance extends the roadside assistance coverage offered during the new-vehicle limited-warranty period throughout the M.A.P. term. The Premium Roadside Assistance offers Towing, Winching, Battery Boost, Out-of-Fuel Coverage, Tire Service, Lockout Service, Emergency Travel Expense Reimbursement and Travel Planning and Dealer Locator. Should you ever decide to sell your Mazda vehicle, M.A.P. is transferable to future owners and will enhance the resale value of your vehicle. The Mazda Added Protection Plan is fully backed and administered by Mazda Canada Inc. For more information, please contact your Mazda Dealer.



Ask your dealer about Mazda's competitive program for recent university and college graduates.

Product changes and options availability: Following publication of this brochure, certain changes in standard equipment, options, prices and the like, or product delays may have occurred which would not be included in these pages. Your Mazda Dealer is your best source for up-to-date information. Mazda reserves the right to change product specifications at any time without incurring obligations. Options and accessories shown or described in this brochure are available at extra cost and may be offered only in combination with other options or subject to additional ordering requirements or limitations. E. & O. E.

Find out more on:



Get more detailed information on your CX-5. Check out our website at [mazda.ca](http://mazda.ca) for specifications and features, option packages, pricing, financing, to get a quote and find a dealer near you.

© 2013 Mazda Canada Inc., 55 Vogell Road, Richmond Hill, Ontario L4B 3K5 Printed in Canada Part No. 9999-92-C514-EN

**BETTER DRIVERS  
BUCKLE UP**

